

## Enhancing Cleanroom Efficiency and Safety with Advanced Wiper Dispensers

### INTRODUCTION

In cleanroom gowning areas - where personnel transition from uncontrolled to controlled environments - maintaining contamination control is especially critical. Wipers are often used during gowning for cleaning gloves before entry. However, wiper bags are commonly placed on benches, or other available surfaces, which can lead to **clutter, cross-contamination, and inefficient access**. Teknipure's cleanroom wiper dispensers are specifically designed to address these challenges in the gowning room and cleanrooms in general. By providing organized, wall-mounted, and easy-to-use dispensing solutions, **they enhance cleanliness, streamline gowning protocols, and improve overall user convenience without compromising cleanroom integrity**.

### KEY BENEFITS OF CLEANROOM WIPER DISPENSERS

#### 1. Wall-Mountable Design for Space Optimization

One of the primary advantages of advanced wiper dispensers is their ability to be securely mounted on cleanroom walls. This feature optimizes limited workspace by **freeing up** bench areas and **reducing the risk** of accidental contamination caused by placing wiper packages on open surfaces. Wall-mounted dispensers ensure wipers are always accessible **at ergonomic heights** for personnel, **supporting efficient workflow** and **reducing time** spent searching for supplies.



## 2. Multi-Use with Easy Refills

The multi-use capability of Teknipure's wiper dispensers allows cleanroom personnel to replace wiper supplies **quickly and cost-effectively** without changing the entire dispenser unit. The ability to easily swap out wiper bags **reduces waste and supports sustainability efforts**, while maintaining a **consistent, contamination-controlled** source of clean wipers.



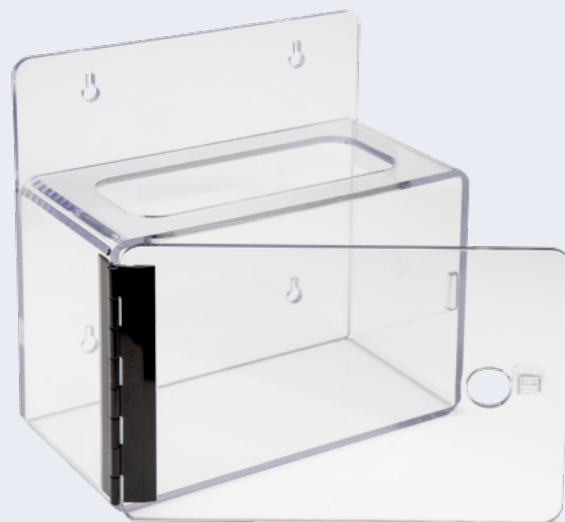
## 3. Integration with Slider Bags to Preserve Wiper Integrity

The dispensers are compatible with innovative slider-style resealable bags, which provide an airtight seal that **prevents the drying out of wipers or evaporation** of impregnated solvents such as isopropyl alcohol (IPA). Maintaining the moisture level and chemical integrity of wipers is essential for effective cleaning and disinfection, particularly in ISO Class 3 to 5 cleanroom environments. This feature **extends the usable life** of the wipers and **improves cleaning reliability**.

## 4. Made from Clear Polyethylene for Easy Cleaning and Visual Monitoring

The construction of dispensers from clear polyethylene (PETG) offers several advantages:

- **Easy to Clean:** PETG surfaces are smooth and **resistant to common cleanroom cleaning agents**, allowing for **rapid, thorough decontamination** between uses without damage or residue buildup.
- **Visual Inventory Management:** Transparency enables users to quickly estimate the remaining quantity of wipers in the bag, without opening the dispenser, facilitating **timely refills and avoiding downtime**.
- **Durability and Chemical Resistance:** PETG is robust enough to withstand the rigors of cleanroom use, including **repeated cleaning cycles and exposure to solvents**, while maintaining structural integrity.



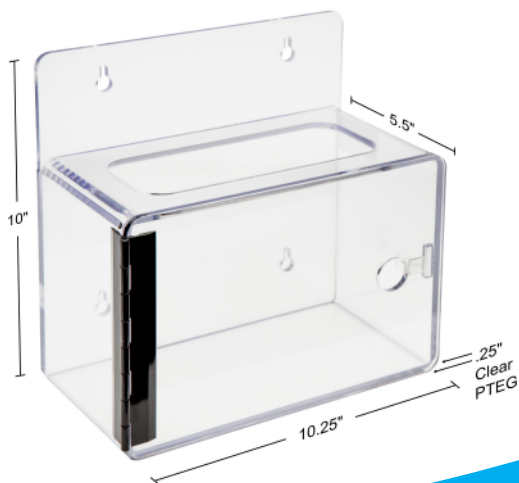
## 5. Reusability Promotes Cost-Effectiveness

These dispensers are designed for **long-term use**. Their durable construction and refillable design **enhance workflow and ultimately reduce costs**. By investing in wiper dispensers, cleanroom facilities can enhance user-friendliness while maintaining stringent contamination control standards.



## CONCLUSION

Cleanroom wiper dispensers represent a critical improvement in **cleanroom consumable management**, providing cleanroom personnel with **convenient, efficient, and contamination-safe access** to essential cleaning materials. Their wall-mount capability **optimizes workspace**, multi-use refill capability **reduces waste and costs**, minimizes contamination and wastage, and compatibility with slider bags **preserves wiper efficacy**. Constructed from clear PETG, they are **easy to clean and monitor**, supporting uninterrupted cleanroom operations and contributing to a cleaner and safer cleanroom environment.



### Teknipure Wiper Dispensers:

| Part Number         | Description   | Packaging                  |
|---------------------|---|----------------------------|
| <b>TEK-995-PETG</b> | Wall Mounted Holder for Bagged Wipers,<br>1/4" clear PETG<br>10.25" wide x 10" high x 5.5" deep | 1 wiper dispenser per case |

## Presaturated Wiper Products Compatible with Teknipure's Wiper Dispenser

### TekniClean® Presat

| Part Number   | Description   | Packaging  | IPA % |
|---------------|---|--|-------|
| TS2PL6G-99    | Polyester Knit Wiper with Sealed Edge, Presaturated with 6% IPA/94% DIW, 9"x9" (23 cm x 23 cm)          | 75 wipes/resealable bag, 6 bags/case, Total 450 wipes/cs     | 6%    |
| TS2PUI09Z-99  | Polyester Knit Wiper with Sealed Edge, Presaturated with 9% IPA/91% DIW, 9"x9" (23 cm x 23 cm)          | 50 wipers/slider bag, 15 bags/case, Total 750 wipes/cs       | 9%    |
| TS2PUI70Z-44  | Polyester Knit Wiper with Sealed Edge, Presaturated with 70% IPA/30% DIW, 4"x4" (10 cm x 10 cm)         | 600 wipers/slider bag, 12 bags/case, Total 7200 wipes/cs     | 70%   |
| TS2PL270-66   | Polyester Knit Wiper with Sealed Edge, Presaturated with 70% IPA/30% DIW, 6"x6" (15 cm x 15 cm)         | 50 wipers/gusset bag, 12 bags/case, Total 600 wipes/cs       | 70%   |
| TS2PL270G-66  | Polyester Knit Wiper with Sealed Edge, Presaturated with 70% IPA/30% DIW, 6"x6" (15 cm x 15 cm)         | 50 wipers/slider bag, 12 bags/case, Total 600 wipes/cs       | 70%   |
| TS2PU70G-99   | Polyester Knit Wiper with Sealed Edge, Presaturated with 70% IPA/30% DIW, 9"x9" (23 cm x 23 cm)         | 50 wipers/gusset bag, 15 bags/case, Total 750 wipes/cs       | 70%   |
| TS2PUI70Z-99  | Polyester Knit Wiper with Sealed Edge, Presaturated with 70% IPA/30% DIW, 9"x9" (23 cm x 23 cm)         | 50 wipers/slider bag, 15 bags/case, Total 750 wipes/cs       | 70%   |
| TS2PL2I70-99G | Polyester Knit Wiper with Sealed Edge, Presaturated with 70% IPA/30% DIW, 9"x9" (23 cm x 23 cm)         | 75 wipers/gusset bag, 6 bags/case, Total 450 wipes/cs        | 70%   |
| TS2PI70-99S   | Sterile Polyester Knit Wiper with Sealed Edge, Presaturated with 70% IPA/30% DIW, 9"x9" (23 cm x 23 cm) | 50 wipers/slider bag, 10 bags/case, Total 500 wipes/cs       | 70%   |
| TS2PL285G-99  | Polyester Knit Wiper with Sealed Edge, Presaturated with 85% IPA/15% DIW, 9"x9" (23 cm x 23 cm)         | 75 wipers/slider gusset bag, 8 bags/case, Total 600 wipes/cs | 85%   |
| TS2PUI100Z-44 | Polyester Knit Wiper with Sealed Edge, Presaturated with 100% IPA, 4"x4" (10 cm x 10 cm)                | 150 wipers/slider bag, 20 bags/case, Total 3000 wipes/cs     | 100%  |
| TS2PUI100Z-99 | Polyester Knit Wiper with Sealed Edge, Presaturated with 100% IPA, 9"x9" (23 cm x 23 cm)                | 50 wipers/slider bag, 15 bags/case, Total 750 wipes/cs       | 100%  |

### TekniClean® Pro Presat

|              |   |   |     |
|--------------|---|---|-----|
| TS3PBI70Z-99 | Polyester Knit Wiper with Sealed Border, Presaturated with 70% IPA/30% DIW, 9"x9" (23 cm x 23 cm) | 50 wipes/resealable bag, 15 bags/case, Total 750 wipes/case | 70% |
|--------------|---|---|-----|

### TekniLight™ Presat

|              |   |   |     |
|--------------|---|---|-----|
| TS2PL270G-99 | Polyester Knit Wiper with Sealed Edge, Presaturated with 70% IPA/30% DIW, 9"x9" (23 cm x 23 cm) | 75 wipers/slider bag, 6 bags/Case, Total 450 wipes/cs | 70% |
|--------------|---|---|-----|

### TekniClean® 2Ply Presat

|               |   |   |      |
|---------------|---|---|------|
| TS2PU385G-12  | Polyester Knit 2Ply Wiper with Sealed Edge Presaturated with 85% IPA/15% DIW, 12"x12" (30 cm x 30 cm) | 40 wipers/gusset bag, 4 bags/case, Total 160 wipes/case       | 85%  |
| TS2PU3100G-99 | Polyester Knit 2Ply Wiper with Sealed Edge Presaturated with 100% IPA, 9"x9" (23 cm x 23 cm)          | 50 wipers/slider gusset bag, 10 bags/case, Total 500 wipes/cs | 100% |

### MicroClean™ Presat

|               |   |   |      |
|---------------|---|---|------|
| TS2MWI100Z-99 | Microfiber Woven Wiper with Sealed Edge Presaturated with 100% IPA, 9" x 9" (23 cm x 23 cm) | 100/pack, 10pks/Case, Total 1000 wipes/case | 100% |
|---------------|---|---|------|

### MicroClean™ Pro Presat

|               |  |   |     |
|---------------|--|---|-----|
| TS3MFB170Z-99 | Microfiber Knit Wiper with Sealed Border, Presaturated with 70% IPA/30% DIW, 9"x9" (23 cm x 23 cm) | 50 wipes/resealable bag, 15 bags/case, Total 750 wipes/case | 70% |
|---------------|--|---|-----|

## Presaturated Wiper Products Compatible with Teknipure's Wiper Dispenser

### Microdenier Presat

| Part Number    | Description  | Packaging  | IPA % |
|----------------|--|--|-------|
| TS2PMDUI06Z-99 | Polyester Knit Microdenier Wiper with Sealed Edge Presaturated with 6% IPA/94% DIW, 9" x 9" (23 cm x 23 cm)                                    | 50 wipers/resealable slider bag, 15 bags/cs, Total 750 wipers/case | 6%    |
| TS2PMDUI10Z-99 | Polyester Knit Microdenier Wiper with Sealed Edge Presaturated with 10% IPA/90% DIW, 9" x 9" (23 cm x 23 cm)                                   | 50 wipers/resealable slider bag, 15 bags/cs, Total 750 wipers/case | 10%   |
| TS2PMDUI70Z-99 | Polyester Knit Microdenier Wiper with Sealed Edge Presaturated with 70% IPA/30% DIW, 9"x 9"(23 cm x 23 cm) in ESD Static Shield Resealable Bag | 50 wipers/resealable bag, 15 bags/case, Total 750 wipers/case      | 70%   |

### TekniZorb® Presat

|                 |  |  |     |
|-----------------|--|--|-----|
| TS1PCS26G-99    | Polyester/Cellulose Nonwoven Wiper Refill, Presaturated with 6% IPA/94% DIW, 9"x 9" (23 cm x 23 cm)          | 300 wipes/gusset bag, 3 bags/case, Total 900 wipers/case | 6%  |
| TS1PC70G-99     | Polyester/Cellulose Nonwoven Wiper, Presaturated with 70% IPA/30% DIW, 9"x 9" (23 cm x 23 cm)                | 200 wipes/gusset bag, 4 bags/case, Total 800 wipers/case | 70% |
| TS1PCI70G-711   | Polyester/Cellulose Nonwoven Wiper, Presaturated with 70% IPA/30% DIW, 7"x 11" (18 cm x 28 cm)               | 200 wipes/bag, 4 bags/case, Total 800 wipers/case        | 70% |
| TS1PCI70-99S    | <b>Sterile</b> Polyester/Cellulose Nonwoven Wiper, Presaturated with 70% IPA/30% DIW, 9"x 9" (23 cm x 23 cm) | 30 wipes/bag, 24 bags/case, Total 720 wipers/case        | 70% |
| TS1PCI70-99S/50 | <b>Sterile</b> Polyester/Cellulose Nonwoven Wiper, Presaturated with 70% IPA/30% DIW, 9"x 9" (23 cm x 23 cm) | 50 wipes/bag, 24 bags/case, Total 1200 wipers/case       | 70% |

### TekniPolyPro™ Presat

|               |   |  |     |
|---------------|---|--|-----|
| TS1MPI70Z-911 | Polypropylene Wiper Presaturated with 70% IPA/30% DIW, 9" x 11" (23 cm x 28 cm), Z Fold | 200 wipes/bg, 10 bags/case, Total 2000 wipers/case | 70% |
|---------------|---|--|-----|

